

# L I M E K I L N

A private-hire lodge available for events, parties and takeovers,  
surrounded by Sussex woodland

OPENING APRIL 2024



# INTRODUCING

---

The owners behind Kin House in Wiltshire are launching a new private-hire events space in Sussex — LIMEKILN — opening in April 2024. Designed with the same hallmarks of considered interior design, service, curated activities and all the signature luxuries, LIMEKILN provides space to tell your story, with ultimate flexibility in mind.

---

# LIMEKILN

# THE

---

LIMEKILN is set against a backdrop of Sussex countryside and ancient woodland — from which the lodge takes its name — making it a fully private space for clients looking for an exclusive-use venue. The interior design is led by Red Deer; the creative studio behind Lina Stores and St John.

There's a large dining space for 180 guests, a bar and lounge, plus two further spaces for private dining, partying, presentations or ceremonies, all centred around an open-air courtyard. A split-level Apartment can be used as a pre-party dressing area or meeting space.

Each room allows clients the freedom to choose a format that suits their requirements.

The lodge is within easy reach of London; just a 40-minute train ride from London Bridge, and 10-minute drive from Tunbridge Wells station.

Hosting everything from weddings and blowout parties, to team away days, creative showcases and product launches, LIMEKILN is a place to gather great people and create meaningful moments.

---

# LODGE



## KILN BAR



Walk inside and you're immediately greeted by *Kiln Bar*; a large lounge space complete with a floor-to-ceiling fireplace clad in hand-painted tiles, and a central bar. This is the heart of the lodge; a warm and inviting place to gather with friends, family, workmates and collaborators.









## COURTYARD



Guests can congregate in the central *Courtyard* for drinks receptions or al fresco lunches and dinners, where there are striped sofas, armchairs and bistro tables for soaking up the sunshine.





# BEHIND

---

The whitewashed timber cladding and large metal windows that characterise LIMEKILN's exterior are inspired by rural Sussex architecture, while inside warm, earthy colours recall artwork by the Bloomsbury group, who frequently gathered at nearby Charleston.

---

# THE DESIGN





## ALDER ROOM



Move further through the building and you'll find *Poplar Hall* and the *Alder Room* — our two largest spaces — which can be used for dining, dancing, weddings, product launches, pop-ups, exhibitions or creative workshops.



## POPLAR HALL



*Poplar Hall* can host up to 195 for a seated meal, and 300 for drinks receptions, while the *Alder Room* has capacity for 140-person dining and 200 seated for ceremonies and presentations.





## GREEN CLUB



Opulent chandeliers, antique mirrored walls and sumptuous velvet curtains make this a cosy private dining space-cum-late-night lounge.





## APARTMENT



The split-level *Apartment* is a place to relax and get ready before an event, and doubles as a breakout space for meetings and brainstorming sessions. There's a hair-washing station, salon chairs and a shower bath, as well as a seating nook with help-yourself snack baskets.







# SPACE TO TELL

## EATING IS AN EVENT

---

We've partnered with the best caterers in the UK to bring you a diverse range of menus and dining options, so you can decide what works for you. Our food philosophy is simple: delicious ingredients and unfussy cooking that celebrates the joy of eating.

## THINGS TO DO

---

The lodge is perfectly situated for outdoor activities and dining, against a backdrop of woodland and rolling Sussex countryside. Picnic lunches, BBQs and lawn games, winter walks, hot toddies by the fire, or a round of golf on our private nine-hole course are just a few of the things to keep you busy while you're here.

We also offer creative workshops such as pottery, floristry and block-printing, and wellness classes like yoga, Pilates, meditation, forest bathing and sound baths. Please ask to see our recommended list of activities.

# YOUR STORY





# LODGE &

---

Take a closer look at our setting and spaces

---

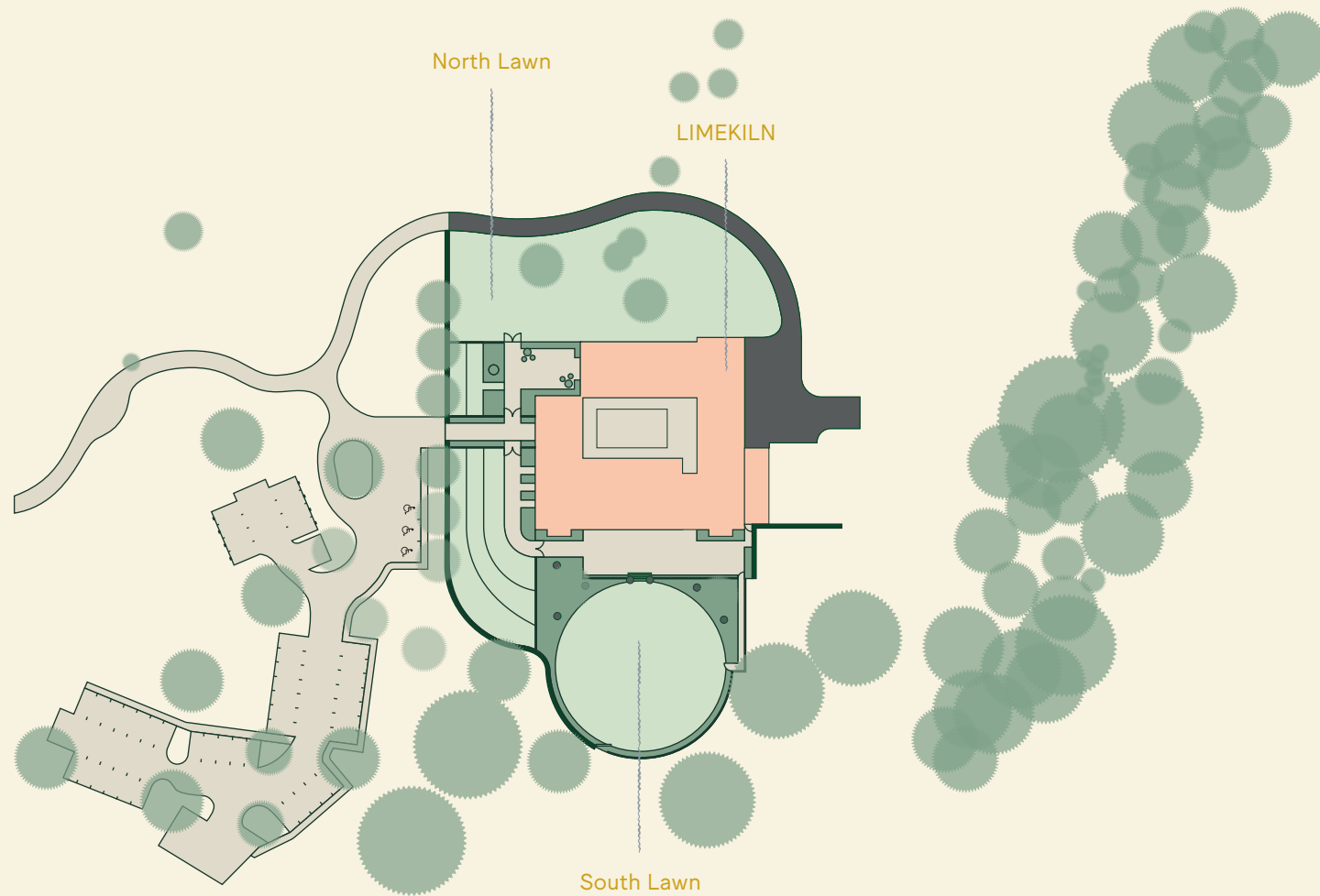
# GROUNDS





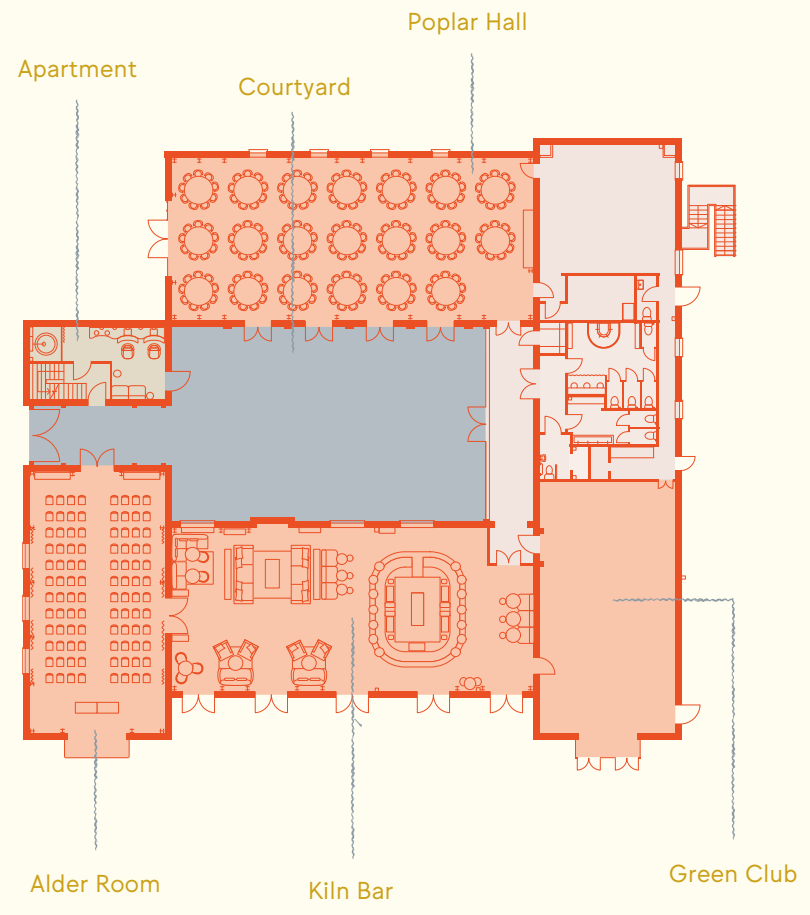


# LODGE & GROUNDS

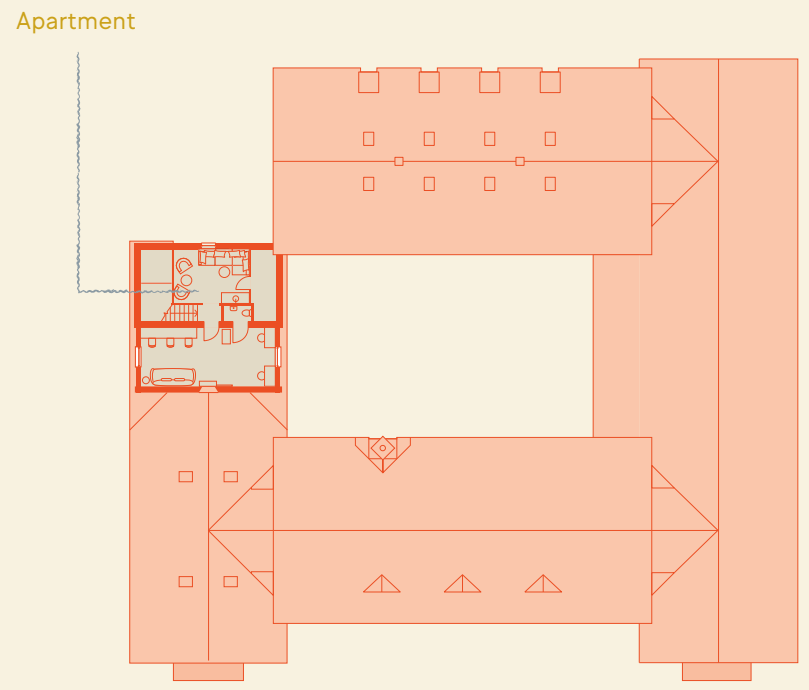




# GROUND FLOOR



# FIRST FLOOR



# 2024 / 25

Venue hire starting from

2024

Monday — Thursday	£7,250
Friday	£10,250
Saturday	£14,500
Sunday	£8,250

2025

Monday — Thursday	£7,500
Friday	£10,750
Saturday	£15,750
Sunday	£8,750

These rates are inclusive of VAT. LIMEKILN is available for private hire on an exclusive-use basis. Bank holiday weekend rates can vary, please get in touch to find out more. Our Saturday rates apply on bank holiday Sundays, and Sunday rates apply on bank holiday Mondays. There is an additional New Year's Eve service charge.

# RATES







## GET IN TOUCH



Please get in touch with us at *[hello@limekilnsussex.co.uk](mailto:hello@limekilnsussex.co.uk)* to book in for a visit, and for more information on pricing and date availability.

LIMEKILN  
Eridge, Sussex

@limekilnsussex

