

L I M E K I L N

A private-hire lodge available for events, parties and takeovers,
surrounded by Sussex woodland

PRIVATE EVENTS BROCHURE



INTRODUCING

From the owners behind Kin House in Wiltshire, LIMEKILN is a private-hire lodge set against a backdrop of Sussex woodland – from which the lodge takes its name. Hosting everything from blowout parties and creative showcases, to team away days and product launches, LIMEKILN is a place to gather great people and create meaningful moments.

LIMEKILN



THE

LIMEKILN is a fully private space for clients looking for an exclusive-use venue, with interior design by Red Deer; the creative studio behind Lina Stores and St John.

There's a large dining space for 195 guests, a bar and lounge, plus two further spaces for private dining, partying, presentations or pop-ups, all centred around an open-air courtyard.

A split-level Apartment can be used as a dressing area or breakout meeting space. Each room allows clients the freedom to choose a format that suits their requirements.

The lodge is within easy reach of London; just a 50-minute train ride from London Bridge, and 15-minute drive from Tunbridge Wells station.

LODGE



KILN BAR



Walk inside and you're immediately greeted by *Kiln Bar*; a large lounge space complete with a floor-to-ceiling fireplace clad in hand-painted tiles, and a central bar. The heart of the lodge is the perfect place to gather for talks, drinks parties, networking events and meetings.





COURTYARD



Guests can congregate in the central *Courtyard* for drinks receptions or al fresco lunches and dinners, where there are bistro tables and lounge seating for soaking up the sunshine. It's also a great spot for outdoor workshops such as floristry or painting.







ALDER ROOM



Move further through the building and you'll find *Poplar Hall* and the *Alder Room* — our two largest spaces — which can be used for dining, dancing, product launches, exhibitions or creative workshops.

POPLAR HALL



Poplar Hall can host up to 198 for a seated meal, and 300 for drinks receptions, while the *Alder Room* has capacity for 120-person dining and 180 seated for theatre-style presentations.





GREEN CLUB



Opulent chandeliers, antique mirrored walls, velvet-covered club chairs and a sumptuous vintage Italian sofa make this a cosy private dining space-cum-late-night lounge.



APARTMENT



The split-level *Apartment* is a place to relax and get ready before an event, and doubles as a product launch space or breakout room. There's a hair-washing station, salon chair and a shower bath downstairs, as well as a seating nook with help-yourself snack baskets.





THINGS

We can organise a range of activities to keep you busy while you're with us. Our rural location means there's plenty to do outdoors – a round of golf on our private nine-hole course, clay pigeon shooting, foraging in our woods and forest bathing are just a few things you can do with workmates, friends or collaborators to recalibrate and recentre. We can also arrange offsite trips such as wine tastings at award-winning local Sussex vineyards.

TO DO

Taking inspiration from the natural landscape around us, we offer creative workshops such as pottery, block printing, zero-waste cooking and cocktail making, plus wellness classes like yoga, Pilates, meditation and sound baths. Please ask to see our curated list of activities.



EATING &

We've partnered with the best caterers in the UK to bring you a diverse range of menus and dining options, so you can decide what works for you. Whether you're looking for a working lunch, an intimate al fresco dinner, or a grazing menu for a big group, our food philosophy is simple: delicious ingredients and unfussy cooking that celebrates the joy of eating.

DRINKING



SAMPLE MENU

STARTER

Crab tart, pickled pear, tarragon crisp

Egg yolk ravioli, wild mushroom, herb butter, truffle

MAIN

Beef sirloin, romanesco, burnt leeks, black garlic, chive

Halibut, roasted red pepper, fennel, orange

PUDDING

Chocolate cremeaux, salted caramel, creme fraiche sorbet

Raspberry frangipane tart, custard ice cream

Our menus start from £42 +VAT per person for grazing dishes to share, and £54 +VAT per person for a three-course lunch or dinner. Please get in touch with us for a bespoke quote and to see our current menus.

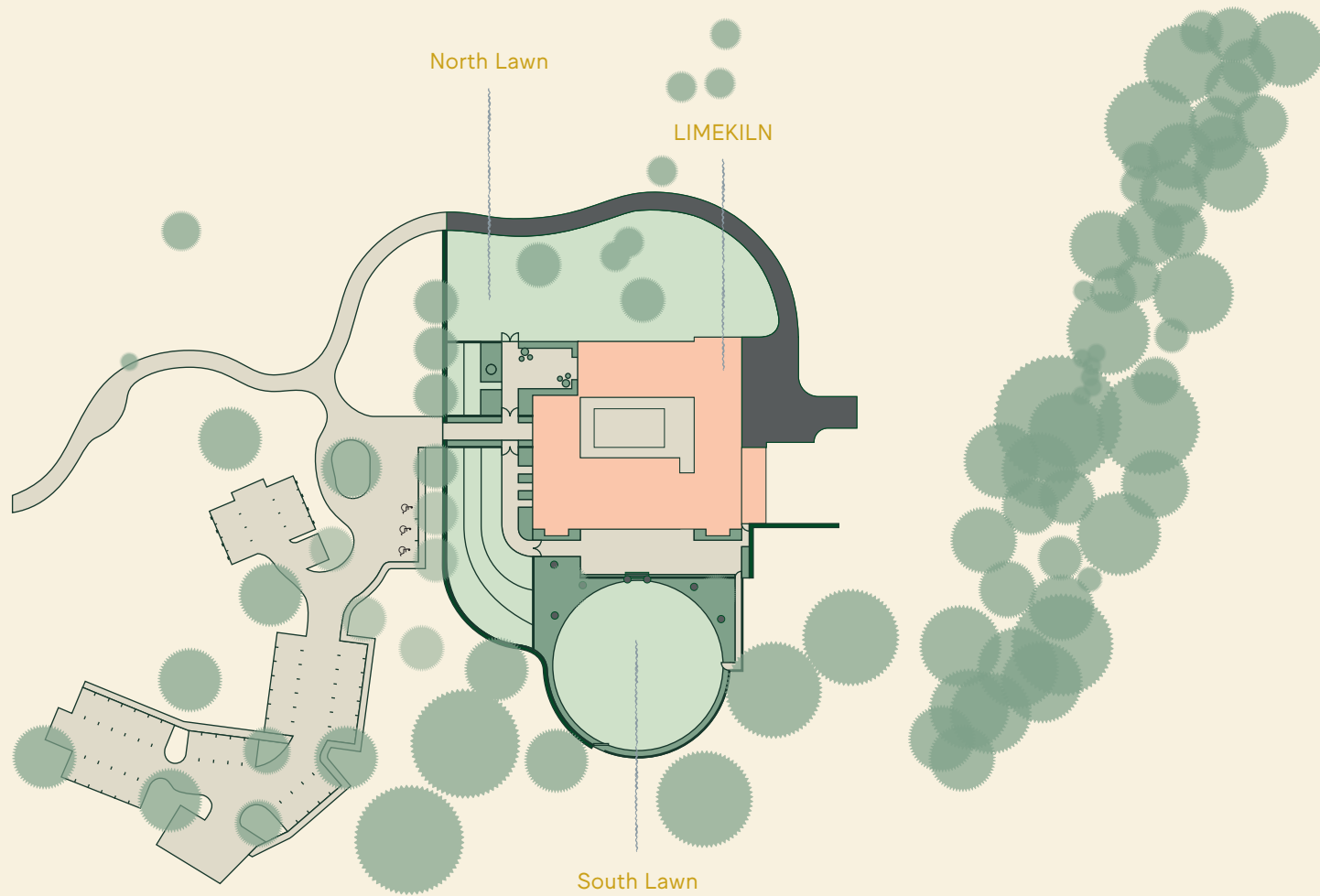


LODGE &

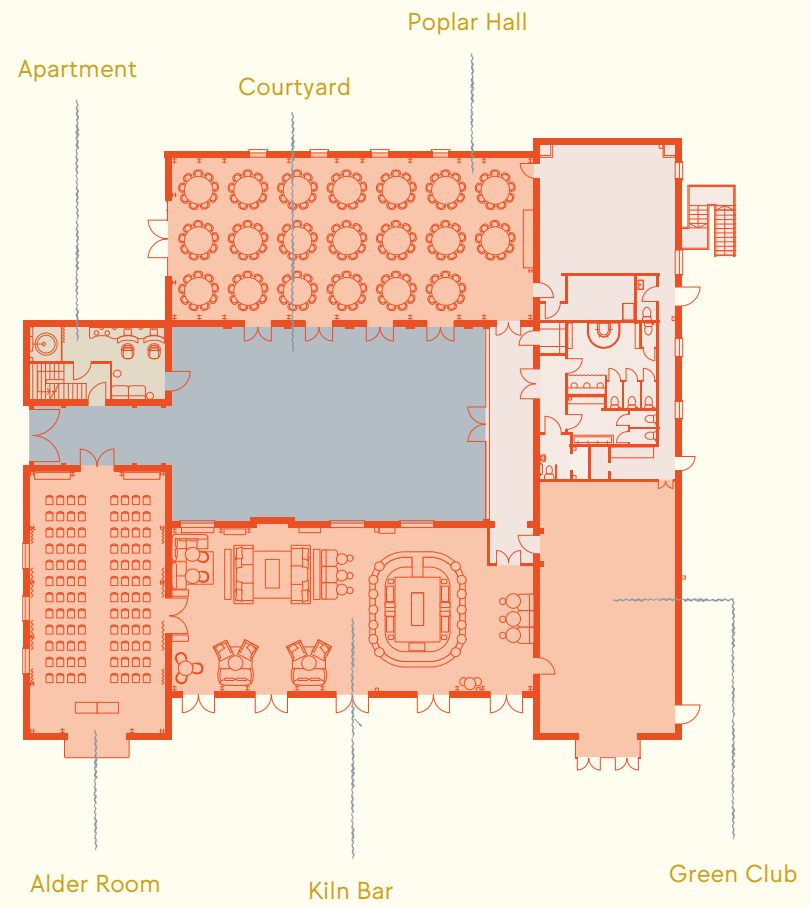
Take a closer look at our setting and spaces

GROUNDS

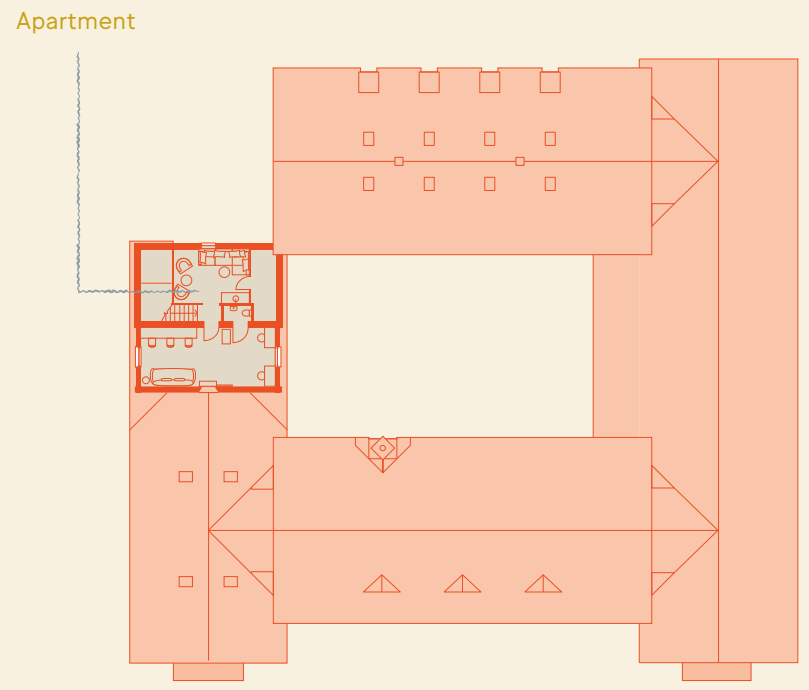
LODGE & GROUNDS



GROUND FLOOR



FIRST FLOOR



ROOM

ROOM	DINING	STANDING	THEATRE	AV CAPABILITY
POPLAR HALL	195	300	220	YES
ALDER ROOM	120	220	180	YES
KILN BAR	8	180	-	YES
GREEN CLUB	120	198	180	YES
COURTYARD	100	120	-	NO

LIMEKILN has a fully integrated AV system allowing for seamless AV interation across our interior and exterior spaces. We have 500mb ultrafast broadband, Eclernet speaker and microphone systems across all ground floor and exterior spaces, and there are EclerNet Digital control panels in each room. The Green Club has an integrated FTB Vertus sound system to support more immersive audio.

CAPACITIES

GET IN TOUCH



Please get in touch with us at *hello@limekilnsussex.co.uk* to book in for a visit, and for more information on pricing and date availability

LIMEKILN
Eridge, Sussex

@limekilnsussex

